

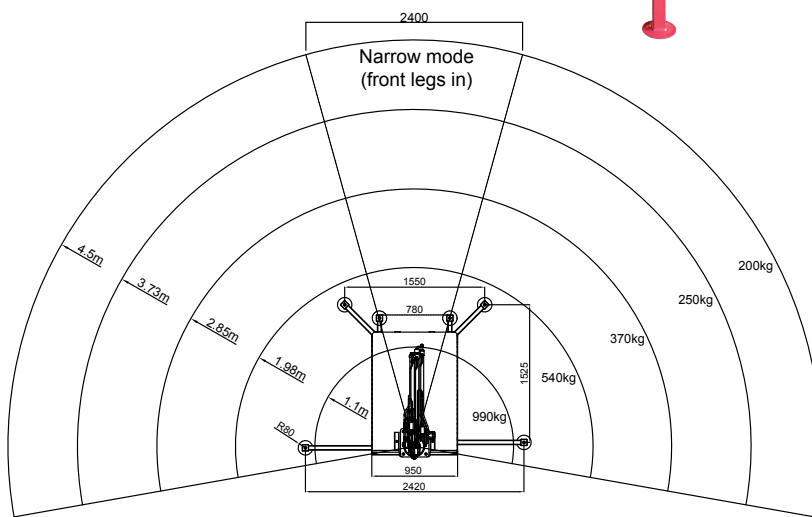
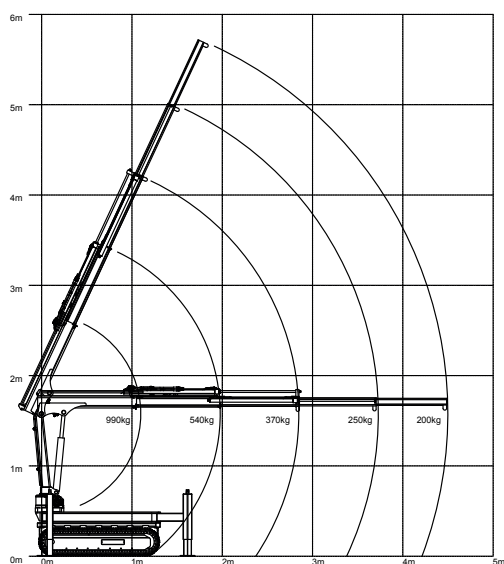
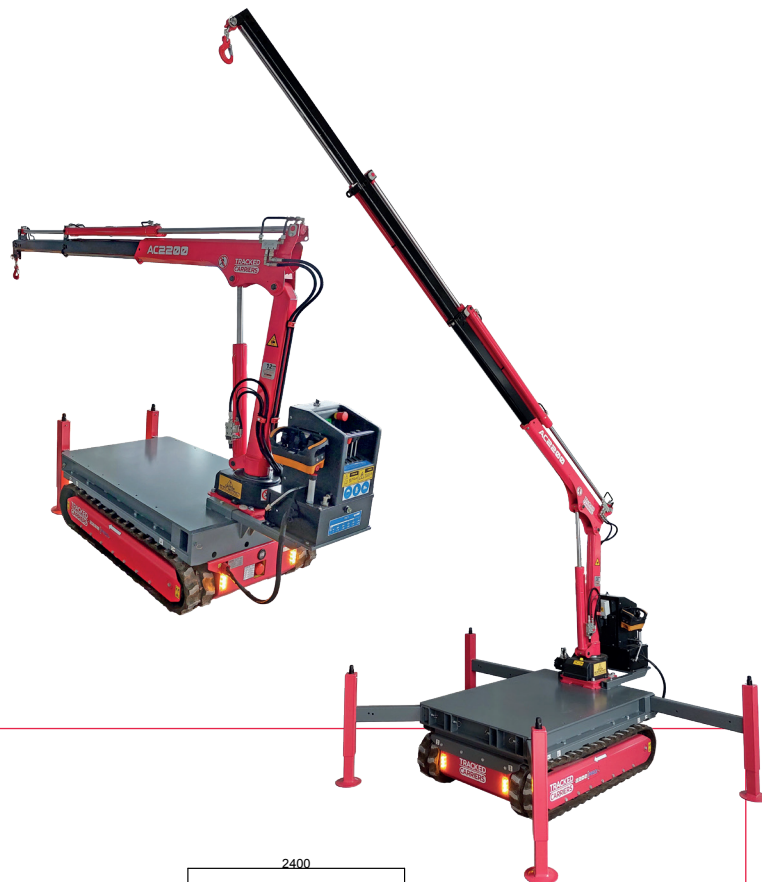
The AC2500 crane accessory from Aconda is designed to fit all 2500 PRO models and can be installed or removed in minutes.

The AC2500 features two modes, wide and narrow. Narrow mode enables the crane to be set up just 950mm wide, yet still allows full lifting duty over the front with 30° slewing available. Wide mode offers 200° slewing and a compact set-up area for multipurpose lifting duties.

The crane has a maximum capacity of 990kg at 1m or 200kg at 4.5m radius.

Whilst the AC2500 crane is mounted, it is still possible to carry up to 2,000kg on the Tracked Carrier making it ideal for self-loading tasks and working in tight and inaccessible areas. Operation is quiet and emission free as with all Aconda products.

When the crane is not required, it can be removed from the Tracked Carrier using its own jacks within minutes.



AC2200 weight 550kg *not including 2500 PRO Tracked Carrier



Contact Us: Aconda, Unit 16, Crittall Road, Witham, Essex, CM8 3DR, UK
Telephone: +44 (0)1621 810999 **E-mail:** info@aconda.com **Web:** www.aconda.com