

LEVO

MRT2 Intelli-Grip Dual Circuit [135kg]

Reduce the strain of glass handling with this practical manual rotate and tilt vacuum lifter.

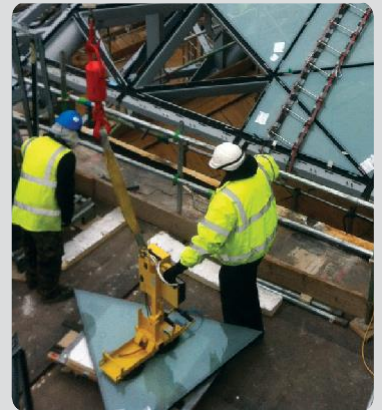
The MRT2 retains all the benefits of our original MT2 vacuum lifter, with the added benefit of 180° rotation (lockable in three positions) to manipulate glass into optimum position.

The MRT2 lifter makes glass handling safe and simple using dual circuit vacuum system technology and two suction cups to transport loads of up to 135kg.

The MRT2 vacuum lifter now includes innovative Intelli-Grip technology as standard. This pioneering safety feature monitors vacuum lifter performance, carrying out multiple diagnostics and communicating them live on a colour LCD screen. This allows the operator to determine issues such as leak rate, battery life and current lifter mode in use, but also serves as a diagnostic system for the use of the equipment.

Key Features

- Capacity: 135kg
- Dual circuit vacuum system with reserve tank, non-return valve and vacuum gauge for each circuit
- 90° manual tilting from vertical to horizontal
- 180° lockable rotation
- 12v rechargeable battery with integral 110v or 240v charger and battery energy gauge
- Audio-visual low vacuum warning
- On-board Intelli-Grip control panel



Technical Specifications

Safe working load (smooth, clean surface at 60% vacuum)	capacity:	135kg
Number of suction cups	cups:	2
Suction cup	description:	black rubber, not abrasion resistant
Suction cup diameter	diameter:	315x415mm
Suitable for lifting	material properties: surface: example:	gastight / non-porous smooth glass, plastic boards, ceramic plates, sheet metals, coated boards
Weight of lifter	approx:	34kg
Depth of lifter	depth:	380mm
Rotation	rotation:	90° manual left & right lockable
Tilt	tilt:	90° manual
Vacuum system	dual circuit:	1 pump, 2 vacuum reserve tanks
Voltage	pump: battery charger:	12v DC from rechargeable battery 110v/240v 50/60Hz single phase factory selectable
Optional accessories	optional:	stone pads (135kg capacity), curved pads (135kg capacity), low marking pads, heat resistant pads, radio remote control

Monitor this machine with
the WPG Intelli-Grip app



MRT2 Intelli-Grip Dual Circuit

Reference Code
VGL04 IG

Technical Data (mm)

