

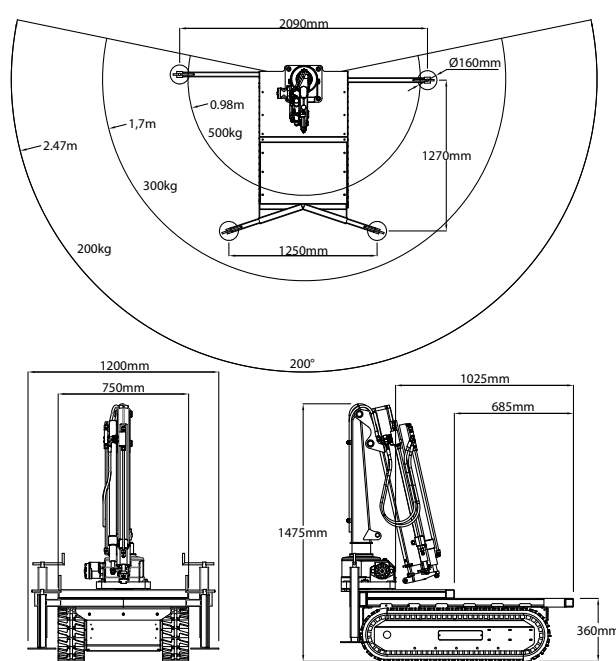
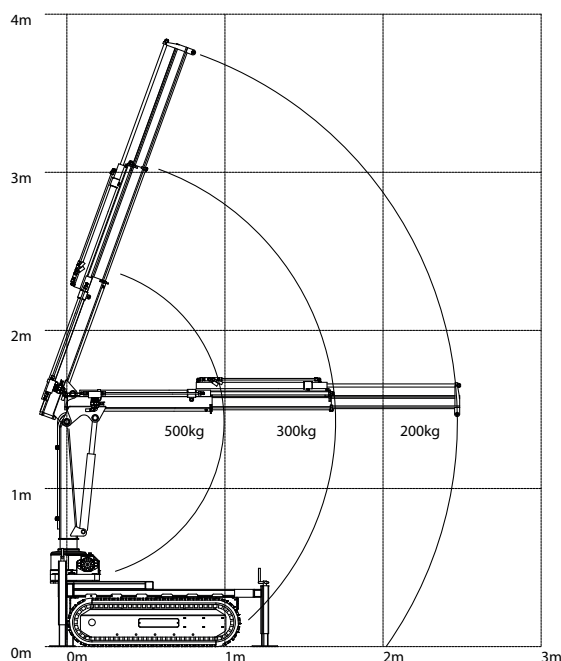
The AC1250 crane accessory from Aconda is designed to fit all 1250 PRO models and can be installed or removed in minutes.

Power is taken from the smart auxiliary output socket featured on all 1250 PRO machines, not only does this provide power on demand for the hydraulic pump within the crane, it also disables drive functions once the crane is operational.

The crane has a maximum capacity of 500kg at 1m or 200kg at 2.5m.

Due to the low weight of the crane, it is still possible to carry up to 1,050kg on the Tracked Carrier, making it ideal for self-loading tasks and working in tight and inaccessible areas. Operation is quiet and emission free as with all Aconda products.

When the unit is not required, it can be detached from the Tracked Carrier and stored on its own jacks, the accessory is only 650mm long and 1200mm wide so requires little room if space is at a premium.



Contact Us: Aconda, Unit 16, Crittall Road, Witham, Essex, CM8 3DR, UK
Telephone: +44 (0)1621 810999 **E-mail:** info@aconda.com **Web:** www.aconda.com