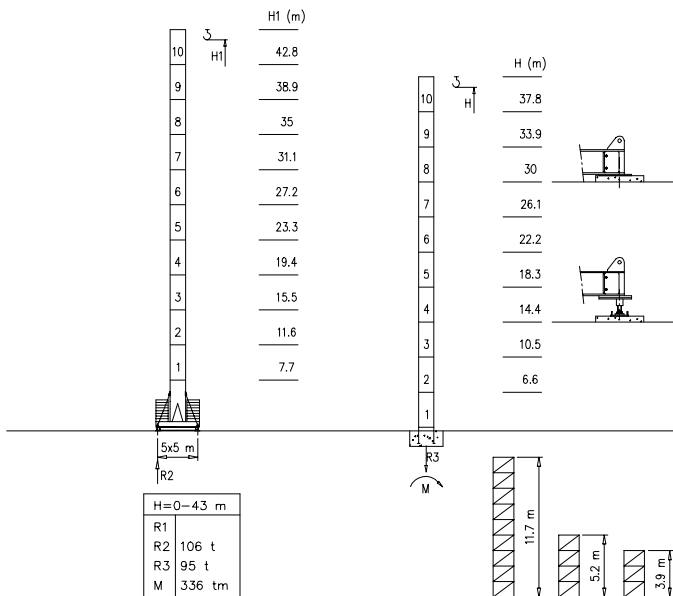
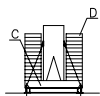


S1700

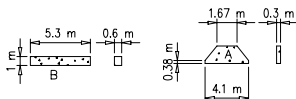
45 m → 65 m



Peso zavorra - Ballast weight - Poids du lest - Ballastgewicht - Peso de lastre



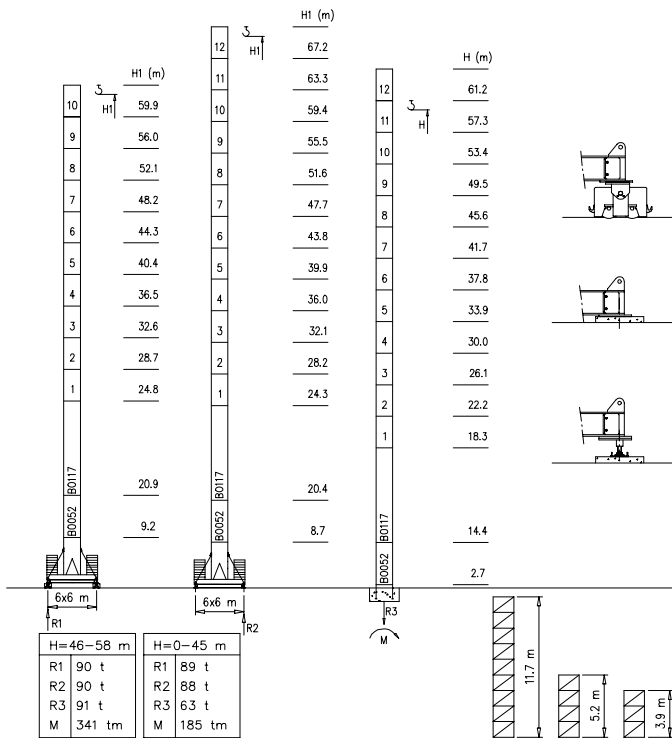
H	n°	Tot.
0-43 m	2A+26B	105000 kg



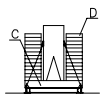
Torre/Reazioni - Masts/Reactions - Mat/Réactions - Maste/Eckdrücke - Mástil/Reacciones - Tramo/Reações

S2050

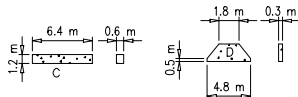
45 m → 65 m



Peso zavorra - Ballast weight - Poids du lest - Ballastgewicht - Peso de lastre



H	n*	Tot.
0-55 m	2C+ 16D	102320 kg
56-67 m	2C+ 18D	112610 kg



Curve di carico - Courbes de charges - Load diagrams - LastKurven - Curvas de cargas

Pmax 6000 kg

	28400 kg	65 m	3.5	30	34	36	38	40	42	44	46	48	50	52	54	56	58	60	62	65	m
			6000	6000	5300	4900	4500	4200	3900	3700	3500	3400	3200	2900	2800	2700	2600	2500	1800	1700	kg
	28400 kg	60 m	3.5	30	34	36	38	40	42	44	46	48	50	52	54	56	58	60			m
			6000	6000	5300	4900	4500	4200	3900	3700	3500	3400	3200	2900	2800	2700	2600	2500	kg		
	25560 kg	55 m	3.5	33	34	36	38	40	42	44	46	48	50	52	54	55					m
			6000	6000	5900	5500	5000	4700	4400	4000	3800	3600	3500	3300	3200	3000	kg				
	22720 kg	50 m	3.5		35	36	38	40	42	44	46	48	50								m
			6000	6000	6700	6200	4900	4600	4300	4000	3700	3500	kg								

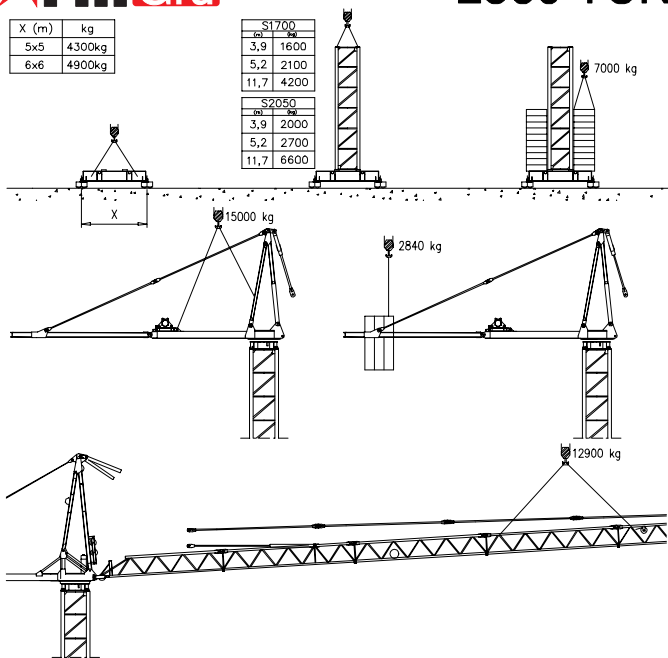
Pmax 12000/6000 kg

	28400 kg	65 m	3.5	16	20	24	28	30	34	36	38	40	42	44	46	48	50	52	54	56	58	60	62	65	m
			12000	9800	8100	6800	6000	5300	4900	4500	4200	3900	3700	3500	3400	3200	2900	2800	2700	2600	2500	1800	1700	kg	
	28400 kg	60 m	3.5	16	20	24	28	30	34	36	38	40	42	44	46	48	50	52	54	56	58	60			m
			12000	9800	8100	6800	6000	5300	4900	4500	4200	3900	3700	3500	3400	3200	2900	2800	2700	2600	2500	kg			
	25560 kg	55 m	3.5	16	20	24	28	30	34	36	38	40	42	44	46	48	50	52	54	55					m
			12000	10000	9000	7600	7000	5900	5500	5000	4700	4400	4000	3800	3600	3500	3300	3200	3000	kg					
	22720 kg	50 m	3.5	18	20	24	28	30	34	36	38	40	42	44	46	48	50								m
			12000	11500	9700	8200	7300	6100	5700	5200	4900	4600	4300	4000	3700	3500	kg								

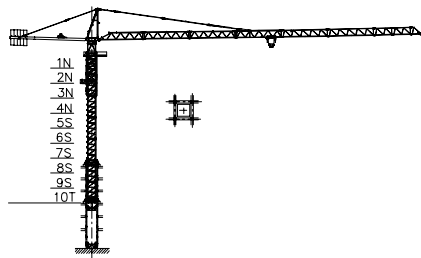
X (m)	kg
5x5	4300kg
6x6	4900kg

S1700	
m	kg
3,9	1600
5,2	2100
11,7	4200

S2050	
m	kg
3,9	2000
5,2	2700
11,7	6600



Gru in cavetto - Climbing crane - Télescopage sur dalles - Kletterkrane in Gebäude - Telescopage gruas trepadoras - Telescopagem sobre lajes



Number of tower section	H (m.)
5S+2N+T	33.40
5S+3N+T	37.30
5S+4N+T	41.20

N = Standard mast element
 T = Telescopic element
 S = Special mast element

Meccanismi – Mechanisms – Mécanismes – Antriebe – Mecanismos

Sollevamento Hoisting Lavage Heben Elevación Elevação	V45.60		1a	2 m/min	6000 kg	33 kW	V45.60 57 kVA
			2a	20 m/min	6000 kg		
			3a	31 m/min	5000 kg		
			4a	46 m/min	3600 kg		
			5a	60 m/min	2600 kg		
			1a	1 m/min	12000 kg		
			2a	10 m/min	12000 kg		
			3a	15 m/min	10000 kg		
			4a	23 m/min	7200 kg		
			5a	30 m/min	5200 kg		
Sollevamento Hoisting Lavage Heben Elevación Elevação	V80.100		1a	2 m/min	6000 kg	60 kW	V80.100 89 kVA
			2a	40 m/min	6000 kg		
			3a	60 m/min	4000 kg		
			4a	80 m/min	3000 kg		
			5a	100 m/min	2600 kg		
			1a	1 m/min	12000 kg		
			2a	20 m/min	12000 kg		
			3a	30 m/min	8000 kg		
			4a	40 m/min	6000 kg		
			5a	50 m/min	5200 kg		
Carrello Trolleying Distribution Katzfahren Distribución Distribuição			1a	5 m/min	12000 kg	5.5 kW	Potenza elettrica necessaria Puissance électrique nécessaire Necessary electric power Anschlusswert Potencia
			2a	40 m/min	12000 kg		
			3a	80 m/min	6000 kg		
Rotazione Slewing Orientation Schwenken Orientación Rotação			1a	0 → 0.2	giri/min tr/min rp/min	6.6 kW @ 1200rpm n° 3 x 2.2 kW	Potenza elettrica necessaria Puissance électrique nécessaire Necessary electric power Anschlusswert Potencia
			2a	0 → 0.6			
			3a	0 → 0.9			
Traslazione Travelling Translation Kranfahren Traslación Tranlação			1a	0 → 5	9 kW	Potenza elettrica necessaria Puissance électrique nécessaire Necessary electric power Anschlusswert Potencia	
			2a	0 → 20			

Rete elettrica – Réseau – Mains supply – Netzstrom – Red – Rede electrica 400V – 50 Hz

